



**File Name:** Canon eos 3 manual espa ol.pdf

**Size:** 3798 KB

**Type:** PDF, ePub, eBook

**Category:** Book

**Uploaded:** 9 May 2019, 20:34 PM

**Rating:** 4.6/5 from 685 votes.

**Download Now!**

Please check the box below to proceed.



I'm not a robot



reCAPTCHA  
Privacy - Terms

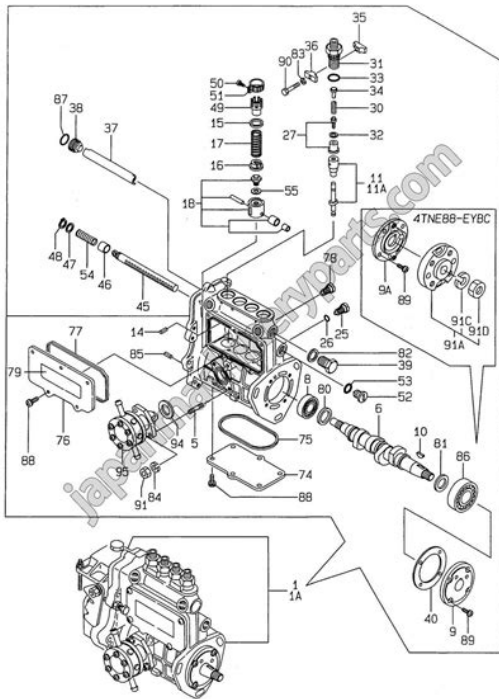
## Book Descriptions:

# Canon eos 3 manual espa ol



Online camera manual library. Butkus, 29 Lake Ave., High Bridge, NJ 088291701 and send your email address Use the above address for a check, M.O. or cash. NOTE they only print in Black and White. Utilizando la vista previa online, puedes ver rapidamente el indice de contenidos y pasar a la pagina donde encontraras la solucion a tu problema con Canon EOS3. Sin embargo, si no quieres ocupar espacio en tu dispositivo, siempre podras descargarlo de ManualsBase. La opcion de impresion tambien esta prevista y puedes utilizarla haciendo clic en el enlace mas arriba Imprimir el manual. No tienes que imprimir el manual completo de Canon EOS3, solo las paginas que elijas. Ahorra papel. Puedes utilizarlos si quieres ver rapidamente el contenido que se encuentra en la siguientes paginas del manual. HEADQUARTERS 6390 Dixie Road, Mississauga, Ontario L5T 1P7, Canada CANON CANADA INC. MONTREAL BRANCH 5990, CotedeLiesse, Montreal Quebec H4T 1V The camera's many features can suit diverse picturetaking requirements from fully automatic operations to highly specialized applications. It also retains the simple electronic dial operation found on other toptier EOS cameras. Before using the camera, read this Instructions booklet and familiariz If the camera gets really wet, promptly consult your nearest Canon Service Center. Wipe off any water droplets with a dry cloth. If the camera has been exposed to salty air, wipe with a wellwring damp cloth. 3 Do not leave the camera in LCD Panel In time, the camera's LCD liquidc Pull the stra The camera does not operate. Set to this position when not using the camera. To turn on the camera, set to this position. After the frame is exposed, the camera advances the film automatically. Using the Elec You then look at the LCD panel and turn the dial during this time. After the function turns off or when the shutter button is pressed halfway again, the camera will be ready to take a picture. <http://extremebootcampustinranch.com/userfiles/doro-680r-manual.xml>

- 1.0.



Buttons which turn on for 6 or 16 seconds are indicated in these Instructions with the following icons 6 The button 'The is used to set the following 1. Realtime exposure compensation 2. Aperture 3. Flash exposure compensation 4. SShooting mode P AF mode OneShot AF Metering mode Evaluative Film advance mode Single Focusing point selection Automatic Multiple exposures Canceled Exposure compensation 0 Flash exposure 0 compensation AE lock Canceled FE lock Canceled AEB Canceled Custom Functions Sett. Using a nonEF lens with an EOS camera may not result in proper camera or lens operation. Also, the warranty does not cover any malfunction or damage occurring with the use of nonCanon lenses. However, if this procedure is repeated and " malfunction. In such a case, ". Check the battery power in the following cases 1 After replacing the battery. 2 After not using the camera for an extended period. 3 The shutter does not work. Mirror page 89 Selftimer lamp page 87 Shutter button page 16 Depthoffield preview button page 90 Grip page 21 Grip screw page 21 Tripod socket. Shooting mode Program AE Manual exposure Shutter speedpriority Depthoffield AE Aperturepriority AE Aperture AEB amount Focusing point selection mode Custom Function. If you are a new EOS user, read this chapter first. If you are familiar with the basic operations of EOS cameras and want to start using the camera right away, see "Quick Start with Program AE". Remove the grip to install one 2CR5 lithium battery. Battery release lever Lithium batteries may not be available in certain areas. Carry a spare battery when going on a trip or when you will use many rolls of film. AF stands for autofocus. Mounting a Lens Remove the rear lens cap and the camera body cap by turning them. When you close the camera back, the film will advance to frame 1 automatically. See page 112. When using the camera in high temperatures, do not remove the film packaging until you are ready to load the film.<http://anhbanglaw.com/userfiles/doro-930r-manual.xml>



KolarVision LLC

The ISO film speed is standardized by the International Standardization Organization ISO. The EOS3 can display a film speed from 6 to 6400. Loading Film. During film rewind, pressing the This mode sets both the shutter speed and aperture automatically to suit the subject's brightness. Anyone can easily take pictures in this mode. By using the focusing points in the wide area AF ellipse in the viewfinder, it is easy to compose and capture a variety of subjects. If the focusing point has been selected manually see page 38, it lights dimly while it is active for While pressing the Although the picture can be taken, it may come out too light or too dark. For details, see "Exposure Warning List" on page 130. Shifting the Program In the Program AE mode, you can freely change the shutter speed and aperture combination program set by the camera while retaining the. When selecting a dioptic adjustment lens, first attach it to your camera and check that it is the proper one before purchasing. By selecting the optimum focusing point, autofocus can be executed while you maintain the desired subject framing. You can also set the AF mode to suit the subject or intended effect. All 45 focusing points are not displayed at one time. The camera has two AF modes OneShot AF for still subjects, and AI Servo AF for moving subjects. AI is an abbreviation for Artificial Intelligence. Select the AF mode which suits the subject. Infocus indicator If focus cannot be achieved, the infocus indicator in the viewfinder will blink. The area AF ellipse has 45 focusing points, making AF possible over a wide area in the viewfinder. You can concentrate on composing the picture without worrying about whether a focusing point is covering the subject. The camera instantly detects where your eye is looking and activates the corresponding focusing point among the 45 to focus. The camera will then be able to detect where you are looking in the viewfinder.

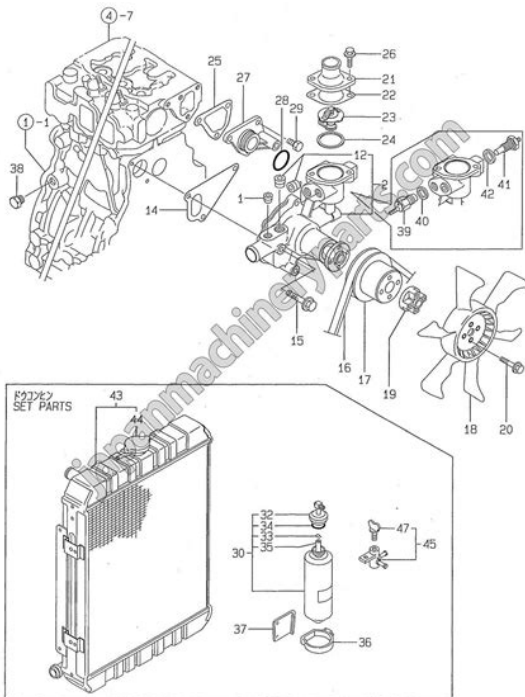
Calibration Procedure You calibrate the camera by looking at a blinking focusing point in the viewfinder and then pressing the shutter button. Hold the camera horizontally. The calibration sequence corresponds to the focusing points numbered from 1 to 4 in the figures. You can then register new calibration data by following the calibration procedure. See page 35. Evaluative metering is recommended for use with the OneShot AF mode which locks the autoexposure setting AE lock at the same time focus is achieved. The EOS3's focusing points are all sensitive to horizontal lines. However, depending on the maximum aperture of the lens, certain focusing points can also be sensitive to vertical lines to enhance AF precision. In such cases, do one of the following 1 Focus an object at the same distance as the subject and lock the focus before recomposing. Turn the lens focusing ring until the subject is in focus in the viewfinder. Spot metering can be at the center of the viewfinder or linked to the active focusing point. There is also multispot metering. Select the metering mode which suits the subject or your photographic intention. The viewfinder is divided into 21 metering zones. All the focusing points are linked to the evaluative metering zones. After detecting the main subject's size, position, brightness, background, front and back lighting, etc., the camera sets the proper. See page 118. During continuous shooting, AE lock with spot metering is set automatically without the Up to eight spot meter readings can be taken for one picture. The following procedure is for taking the sample photo below. Set the metering mode to spot metering. See the figure on the next page for "MultiSpot Metering Display.". You can also easily achieve various photographic expressions.



<http://www.diamondsinthemaking.com/content/4-lane-manual>

Manual page 73 Shutter speedpriority AE page 62 DEP Depthoffield AE page 68 Aperturepriority AE page 65 Multiple exposures page 82 A fast shutter speed can freeze motion, and a slow shutter speed can achieve a blurred effect. The shutter speed displayed on the camera's LCD panel and in the viewfinder ranges from 30 sec. The aperture displayed on the camera's LCD panel and in the viewfinder can range anywhere from 1.0 to 91, depending on the lens attached to the camera. It is effective for largegroup photos and landscapes. The optimum point of focus and aperture to attain the depth of field are set automatically along with the shutter speed. You can refer to the exposure level indicator in the viewfinder or use a handheld exposure meter to determine the shutter speed and aperture. While looking through the viewfinder, you can use either the button to set the exposure compensation amount. Any exposure compensation amount that you set can later be changed or canceled with the To indicate that AEB is in progress, the indicator in the viewfinder will blink until all the bracketed shots are taken. Custom Function CF6 enables the AEB amount to be set in halfstop increments. See page 112. AE lock prevents the meter reading from changing even when you recompose the shot. This feature is useful for backlit and spotlighted subjects. Focus at the point where you want to lock the meter reading. The manuallyset film speed will be canceled the next time DXcoded film loaded. Up to nine multiple exposures can be set for one frame. Multiple exposures can be taken in any shooting mode. Open the side door and press the Singleframe Shooting After a picture is taken, the film advances by one frame automatically. Continuous Shooting The film advances at a rate of 4.3 frames per second while you hold down the shutter button completely. When using the selftimer, you should mount the camera on a tripod.

<http://cristianpack.com/images/brother-ql-500-label-printer-manual.pdf>



The 2second delay is effective for closeups or photo duplicating work to prevent camera shake camera movement while the shutter button is pressed. To prevent this, detach the eyecup and attach the eyepiece cover provided on the strap on the eyepiece before taking the picture. This prevents mirrorcaused vibrations which may blur the image during closeups or when a super telephoto lens is used. To set this Custom Function, see "Setting and Canceling Custom Functions" on page 104. With an EXseries Speedlite, ETTL autoflash photography as well as wireless ETTL multi flash photography is possible. Speedlite 550EX will be used to describe the flash photography features provided with the EOS3. You can also use the following features 1 ETTL Autoflash With ETTL autoflash preflash evaluative metering, optimum flash exposure can be obtained for the subject in focus. For details on Speedlite 550EX operations, see the Instructions that came with it. ETTL Autoflash in Other Shooting Modes Even in the Tv, Av, and M modes, ETTL autoflash can be used as easily as without flash. When highspeed sync is enabled, is displayed in the viewfinder to indicate highspeed sync. If flash exposure compensation is set with both the camera and the Speedlite, the flash exposure compensation amount set with the Speedlite will override the one set with the camera. The flash exposure is controlled by offthefilm flash metering linked to the focusing point. 1 When you press the shutter button halfway, the shutter speed and aperture are set automatically by the camera. The smaller the aperture the larger the Fnumber, the greater the depth of field will be. And the larger the aperture the smaller the Fnumber, the shallower the depth of field will be. In the previous text, the CF symbol was used to point out a relevant Custom Function. In this chapter, all the Custom Functions are described in detail. First set the.

<https://www.kroatien-croliday.de/images/brother-pt-1830-manual.pdf>



Setting and Canceling Custom Functions Altered Custom Function Indicator The Custom Functions which you have altered are indicated on the exposure compensation scale. Be sure to set this Custom Function to suit the focusing screen installed in the camera. Custom Functions CF1 to CF17 can be set to suit your preferences. Custom Function Match the focusing screen Custom Function. Remarks Page Page. Setting Rewinds the film leader into the cartridge. Leaves the film leader outside the CF2 cartridge. Sets the film speed automatically with DXcoded film. CF3 Enables the film speed to be set manually. This is effective if you want to set the film speed yourself. You can be relieved from setting the film speed each time you load film. Setting Enables the Frame counter display No.The shutter speed and aperture can be set in the familiar fullstop increments. Suited for negative films which have a wide exposure latitude.Setting standard exposure, underexposure, overexposure, then automatic cancellation.CF9 Underexposure, standard exposure, overexposure, then automatic cancellation. Underexposure, standard exposure, overexposure, and no automatic cancellation. Therefore you can keep taking AEB shots with the standard exposure first. You can keep taking AEB shots in this sequence. This applies during manual focusing point selection and EyeControl AF. During automatic focusing point selection, the focusing point does not light dimly after focus is achieved. This makes focusing point selection faster and links spot metering to the focusing point you select. This setting is effective for spotlighted subjects onstage, etc., when you want to maintain the framing of the subject. Compared to setting 0, this setting makes focusing point selection faster. This feature is convenient when the scene's brightness changes suddenly. This setting is suited for subjects whose focusing distance changes irregularly. It gives reference information and introduces system accessories.

If the problem still persists, take the camera to your nearest Canon Service Center. Canon Service Centers are listed on the back of this booklet. Problem No battery has been installed. Take the camera and any attached lens and flash unit to your nearest Canon Service Center. Troubleshooting Guide Solution Page Back. Numbers from "4" to "8000" denote the denominator of the shutter speed fraction.You must also set Custom Function CF0 so that the standard exposure standard suits the focusing screen.EcB New split screen Compatible with all EF lenses. You can switch between these two power sources to suit the shooting condition. The continuous shooting speed is the same as a plain EOS3. The rated voltage is 12 V. It can be recharged over 500 times.All of the Speedlite's

controls and features can be used as usual. The Cord can be used with all EX series, EZseries, and Eseries Canon Speedlites. Eye Control can also be used while a dioptic adjustment lens is attached. It is compatible with the new Remote Switch RS80N3, Timer Remote Controller TC 80N3, and Wireless Controller LC4 receiver. When a plug is connected, it locks automatically. Cancels automatically after all multiple exposures are taken. After film is loaded and the back is closed, the film advances to frame 1 automatically, taking about 1 sec. Custom Function CF9. Operation is subject to the following two conditions 1 This device may not cause harmful interference, and 2 this device must accept any interference received, including interference that may cause undesired operation. Do not make any changes or modifications to the equipment unless otherwise specified in the instructions. This page requires Javascript. Modify your browsers settings to allow Javascript to execute. See your browsers documentation for specific instructions. To install your download click on the name of the downloaded file.Illumination provided.Manual selection Focusing point manuallyselected.

<http://www.sbawerribee.com.au/wp-content/plugins/formcraft/file-upload/server/content/files/16270d336adb1---bounty-hunter-metal-detector-pioneer-ex-manual.pdf>

Eye Controlled Focus Focusing point eyeslected.AF lock enabled. Shutter releases only when focus is achieved. 2. Predictive AF with AI Servo AF Tracks subject movement up to the start of exposure. Predictive AF enabled. The shutter can be released at anytime regardless of focus predictive AF control takes effect during continuous shooting, no infocus indicator blinks at 8 Hz only if AF fails. 3. Manual focusing Enabled with the focusing ring when the lens focus mode switch is set to MF or M. 4. Full time manual focusing Enabled with the electronic focusing ring during continuous shooting except during film exposure. 5. In focus indicator Lights in viewfinder and beeps. Beeper can be disabled.Repeated bracketing enabled according to current film advance mode.Manual AE lock AE lock button activates AE lock in all metering modes. Multiple exposures Max 9 multiple exposures. Cancels automatically after all multiple exposures are taken.Cancellable and resettable at any time.Lamp blinks at 2Hz, then at 8Hz for the remaining two sec Selftimer countdown on LCD panel. Self timer cancellable by turning the main switch to L.After film is loaded and the back is closed, it advances to frame 1 automatically, taking about 1 sec.EOS3 Single and Continuous shooting. With Power Drive Booster PBE2 Single, Low Continuous, and High Continuous.Midroll rewind possible. Approx. 4.5 sec. for 24ex. film and approx. 6.5 sec. for 36ex. film Rewind noise 59 dB Highspeed rewind, 49 dB Silent rewindThis operation cycle was repeated in continuous shooting mode and highspeed film rewind was used at the end of each roll.All the data are based on Canons Standard Test Method.Recommended Software File Name Date File Size Optional Software File Name Date File Size Recommended Manuals File Name Date File Size Optional Manuals File Name Date File Size The Limited International Warranty is only effective upon presentation of the warranty card and proof of purchase.

[BAHETH24AQARI.COM/ckfinder/userfiles/files/canon-dr2050c-user-manual.pdf](http://BAHETH24AQARI.COM/ckfinder/userfiles/files/canon-dr2050c-user-manual.pdf)

Equipment covered by this Warranty will be repaired by Canon International Warranty Members located in the United States, Canada, Australia, the United Kingdom and New Zealand WITHOUT CHARGE. List of Canon International Warranty Members included with the equipment. Equipment covered by this Warranty will be repaired by Canon International Warranty Members WITHOUT CHARGE, except for insurance, transportation and handling charges. See list of Canon International Warranty Members included with the equipment. When returning equipment for warranty service, the shipping charges must be prepaid and the equipment should be shipped in its original carton or box, or an equivalent, properly packed to withstand the hazards of shipment and be fully insured. A copy of this warranty card and proof of purchase should be enclosed, as well as a description of the problem, film samples, etc. This warranty only covers defective materials or workmanship encountered in normal use of the equipment, and does not apply in the following cases Fred Thomas



Drive, P.O. Box 33336, Takapuna Auckland Canon UK Ltd. Brent Trading Centre. North Circular Road Neasden, London NW10 OJF Canon U.S.A., One Canon Park, Melville, NY 11747 The above address is not to be used for the MAILIN SERVICE program Scroll down to easily select items to add to your shopping cart for a faster, easier checkout. Visit the Canon Online Store Adapter EcC, EdC With three lens elements in three groups, chromatic aberration and distortion are effectively corrected to give crystalclear images. Eye fatigue is not a problem even after prolonged use.Holds 12 Cameras bodies, 34 lenses and accessories. Inside measurements W x H x D 10 x 14.75 x 5 inches. Rugged nylon, waterrepellent, urethane coated for extra durability. Wellarranged divider system for secure storage and easy access. Lightweight construction, padded shoulder straps and back for comfort. Front webbing ideal for storing a light jacket. Tripod carrying straps.

Color Black with Olive.Front and Rear zippered pouches. Zippered fulllength mesh pouch inside top cover. Divider system for secure storage and easy access.It is designed to hold two 35mm SLR bodies, 5 8 lenses, plus film and accessories.It features a 3way pan head for precise control and smooth movement. The 3section tubular leg construction allows for exceptional stability indoors or out.The Deluxe Tripod 300 features a 3 way pan head for precise control while the 3 section tubular leg construction allows enhanced stability indoors and outdoors.The lens fits into the eyepiece holder of you EOS camera. Please see the Compatibility tab for a list of compatible EOS cameras.The Dioptic Adjustment lens fits into the eyepiece holder of the camera. Dioptic adjustment lenses are for the viewfinder eye piece.The Dioptic Adjustment lens fits into the eyepiece holder of the camera. Dioptic adjustment lenses are for the viewfinder eye piece.The lens fits into the eyepiece holder of you EOS camera. Please see the Compatibility tab for a list of compatible EOS cameras.For general photography.The cameras AF points remain fully visible. It is for general photography.It is for closeup and microphotography, and for determining magnification ratios and composition.It is for general photography. Standard for EOS 3.It is an overall bright laser matte and incorporates center spot metering. Standard for EOS 1N RS.Made from Cordura Nylon. Large Zippered Front Accessory Pocket. Zippered Mesh Pocket Inside Top Lid. Two Side Accessory Zippered Pockets. Tripod Loops on Bottom. Five Movable, Padded Internal Dividers. Two Strap Handles with Grip. Removable Shoulder Strap. Rubber Feet for Ground Protection. It features a foam grip on the top leg section, a hand strap, flip lock leg sections, and rubber leg tip.Features adjustable tripod straps, and high strength buckles for the main compartment. The Canon logo is embroidered on the top flap.

The Remote Switch works just like a shutter button, enabling halfway or complete pressing.This remote switch has a selftimer, interval timer, long exposure timer and exposurecount setting feature. The timer can be set from 1 second to 99 hours. A new dial enables you to easily enter the numeric settings with a single thumb. Upon completion of the download, the PDF file opens automatically. You may download and use the Content solely for your personal, noncommercial use and at your own risks. Canon shall not be held liable for any damages whatsoever in connection with the Content, including, without limitation, indirect, consequential, exemplary or incidental damages. You shall also not and shall not let others reproduce, modify, reformat or create derivative works from the Content, in whole or in part. Pour d'autres fonctions et des informations plus detaillees, voir le mode d'emploi de l'appareil photo au format pdf sur le CDROM. Este manual basico cubre solamente las operaciones mas basicas. Para ver otras funciones e informacion mas detallada, consulte el archivo pdf del Manual de instrucciones de la camara en el CDROM. This basic manual covers only the most basic operations. For other features and more details, see the Camera Instruction Manual pdf file in the CDROM. COP Y Siguiete Manual basico de instrucciones. Para ver. Pagina 4 Lista de comprobacion de elementos IntroduccionPagina 5 Simbolos utilizados en este manual Manuales de instrucciones. Este Manual basico de instrucciones explica solo las operacionesPara obtener. Pagina 6 Lista de comprobacion de elementos. Antes de empezar, compruebe si los siguientes elementos acompananIconos de este manualPagina 9 ContenidoCuidado de la camaraNo la deje caer ni la. Pagina 11 Precauciones de manejo. Monitor LCDPagina 15

Nomenclatura Visualización de ajustes de disparo Indicador del. Pagina 17 Nomenclatura. Información del visor Dial de modo. El dial de modo incluye los modos de la zona básica, los modos de la Objetivo.

Objetivo sin escala de distancia Cargador de batería LCE10. Cargador para batería LPE10 p. 20. Pagina 22 Inserción y extracción de la batería y la tarjeta Carga de la batería Tras la compra, la batería no está. Pagina 24 Inserción y extracción de la batería y la tarjeta. Cargue en la cámara una batería LPE10 completamente cargada. La Pagina 26 Inserción y extracción de la batería y la tarjeta Pagina 28 Selección del idioma de la interfaz Encendido de la alimentación Cuando el interruptor de alimentación está situado en. Pagina 29 Montaje y desmontaje de un objetivo 3 Ajuste de la fecha y la hora. Cuando encienda la alimentación por primera vez, o si se ha reiniciado. Pagina 30 3 Selección del idioma de la interfaz Montaje de un objetivo Pagina 32 Funcionamiento básico Montaje y desmontaje de un objetivo. Acerca del zoom Cuando utilice el estabilizador de imagen integrado en un objetivo IS, Ajuste de la claridad del visor Pagina 35 Funcionamiento básico. Disparador. El disparador tiene dos posiciones. Puede presionar el disparador hasta Pagina 36 Formateado de la tarjeta 3 Operaciones de menú. Con los menús, puede establecer diversas funciones tales como la Pagina 37 3 Operaciones de menú. Procedimiento de ajuste de los menús Pagina 38 Cambio de la pantalla del monitor LCD 3 Formateado de la tarjeta. Si la tarjeta es nueva o fue formateada previamente por otra cámara u Pagina 40 Cambio de la pantalla del monitor LCD. El monitor LCD puede mostrar la pantalla de ajustes de disparo, la La Guía de funciones consiste en una sencilla descripción de la función Pagina 44 1 Técnicas de fotografía totalmente automática 1 Toma de fotografías totalmente automática Pagina 45 7 Desactivación del flash 1 Toma de fotografías totalmente automática La luz de confirmación de enfoque parpadea y no se. Pagina 46 C Disparo automático creativo 1 Técnicas de fotografía totalmente automática. Composición de la toma. Según la escena, coloque el motivo a la izquierda o. Pagina 47 7 Desactivación del flash.

En lugares en los que esté prohibida la fotografía con flash, utilice el A diferencia del modo Totalmente automático, en el que la cámara lo Velocidad de obturación 1. Abertura Pagina 50 3 Fotografía de paisajes C Disparo automático creativo El modo Retratos desenfoca el fondo para hacer resaltar a las personas Utilice el modo Paisajes para fotografiar grandes paisajes, Pagina 53 6 Fotografía de retratos nocturnos 4 Fotografía de primeros planos. Si desea fotografiar primeros planos de flores o cosas pequeñas, utilice el Para fotografiar un motivo en movimiento, ya sea un niño corriendo o Para fotografiar a alguien de noche y obtener una exposición de Pagina 56 A Fotografía con el monitor LCD Q Control rápido. Ejemplo Modo Retratos En los modos de la zona básica, cuando Pagina 57 Fotografía con el monitor LCD Pagina 58 A Fotografía con el monitor LCD Activar el disparo con Visión en Directo Pagina 61 Cambio del modo de enfoque automático. Selección del modo AF Modo Rápido f. El sensor AF dedicado se utiliza para enfocar en el modo. Pagina 65 Cambio del modo de enfoque automático Puede ampliar la imagen y enfocar con precisión manualmente. Si ajusta el dial de modo en, puede grabar fácilmente videos de Pagina 69 k Grabación de video. Acerca de la visualización de información Pagina 70 x Reproducción de imágenes k Grabación de video Ver el CDROM Manual de instrucciones de Pagina 77 Ver el CDROM Manual de instrucciones de la cámara Instalación del software Pagina 80 Advertencias de seguridad Guía de iniciación del software Pagina 81 Marcas comerciales Pagina 82 Advertencias de seguridad. Siga estas medidas de seguridad y utilice correctamente el equipo para evitar. Thanks! Ken. This grip is optional; with a standard GRE2 grip the EOS 3 is a much more reasonably sized camera. The EOS 3s AF system is so much faster and easier to use and to set than anything available today.

No matter if I wanted to focus on the obvious part of an image, or a subtle, low-contrast item off to the side, the EOS 3 somehow just knew, and magically used the correct AF sensor every time. The AF system is constantly looking at your eye, and already knows where you're looking when you press the shutter, so without you even having to think, the EOS 3 already knows where it needs to focus,

and it just does. With newer cameras, we again have to slave through dicking around with knobs and dials to choose AF points, something the EOS 3 does all by itself by magic. It does what we need it to do, and isn't loaded with junk features to get in the way. Yes, it has the dreaded custom functions, and they may be ignored. I'm not a fan of the big, optional PBE2 grip, which makes the EOS 3 a pro sized camera with prosized weight, yet only the outward durability of an advanced amateur camera. Canon claims the EOS 3 is gasketed for rain resistance. Bar graph displayed on top LCD. I see no rating for battery life. Canon's new F1 was much, much smoother. Numeric data light up against black along the bottom, and a bar graph runs vertically along the right side. The frame counter is below the bar graph on the right. You can't cheat; when the MODE button is pressed, the finder displays all turn black. If invoked, the various AF points light magically in red as needed, and are never in the way. It feels good, has the right controls in the right places, and actually feels tougher than the EOS 3 itself. A bar graph is displayed on the top LCD. This sets everything back to normal. It doesn't reset the custom functions, so this is a good idea to hit every time you go out shooting to get everything back to normal the easy way. It advances by itself. In the I, or ON, position, the EOS 3 reads your thoughts and selects the correct AF point magically. If you get a long series of beeps instead, the EOS 3 gave up, so try again. You probably can change this in a custom function.

<https://www.informaquiz.it/petrgenis1604790/status/flotaganis25032022-0014>