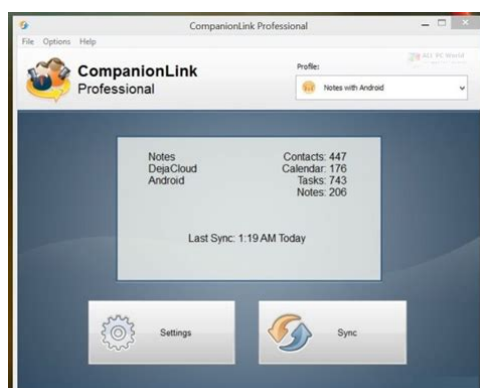


## companionlink user manual



**File Name:** companionlink user manual.pdf

**Size:** 4639 KB

**Type:** PDF, ePub, eBook

**Category:** Book

**Uploaded:** 7 May 2019, 12:21 PM

**Rating:** 4.6/5 from 590 votes.

**Status:** AVAILABLE

Last checked: 4 Minutes ago!

**In order to read or download companionlink user manual ebook, you need to create a FREE account.**

[\*\*Download Now!\*\*](#)

eBook includes PDF, ePub and Kindle version

[Register a free 1 month Trial Account.](#)

[Download as many books as you like \(Personal use\)](#)

[Cancel the membership at any time if not satisfied.](#)

[Join Over 80000 Happy Readers](#)

### Book Descriptions:

We have made it easy for you to find a PDF Ebooks without any digging. And by having access to our ebooks online or by storing it on your computer, you have convenient answers with companionlink user manual . To get started finding companionlink user manual , you are right to find our website which has a comprehensive collection of manuals listed.

Our library is the biggest of these that have literally hundreds of thousands of different products represented.



## Book Descriptions:

# companionlink user manual

We appreciate the support of all our customers during this difficult time. ADB mode uses a special driver if you are unable to sync with Mass Storage. Premium Cloud. We appreciate the support of all our customers during this difficult time. DPC will remind you to do this. However, you need to use a single sync system, that is, you cannot use USB sync to one device and WiFi sync to another. At the end of setup, DPC will synchronize for the first time. So before you set up please be sure youDejaOffice PC CRM Setup Wizard Guide DejaOffice PC CRM Outlook Addin Ctrl0 to reset zoom on a window. We appreciate the support of all our customers during this difficult time. History dedupe. History records when completing an event in DejaOffice. Under the General More tab, put a check in Sync Attachments. Click Here for Details Histories and Realtime auto sync. History dedupe. Cloud Essentials where the sync time would not update Cloud Essentials would be slow Cloud Essentials was not selectable on the handheld side Now synchronizes more than 1000 contacts. API Error when syncing Currently supported only when syncing via DejaCloud or Direct USB Mass Storage Mode. Requires DejaOffice for Android 2.2.7 or higher. It works under the Outlook 2010 sync settings in CompanionLink. The API key method is scheduled to be deprecated by Zoho on June 30. DejaConnect uses Androids USB debugging logic to synchronize data using network protocols over USB cable. This is meant as an alternative synchronization method to mass storage mode, which was previously the only USB sync method for Android offered by CompanionLink. DejaConnect is currently beta. Task lists are mapped to task categories on the PIM. This issue was confined to build 4052. The new method should ensure that data integrity is preserved, in addition to improving sync performance. The corruption results from a documented bug in SQLite 3.7.0 3.7. <http://triangle-electronics.com/assets/userfiles/case-cx160-service-manual.xml>

- **companionlink user manual, companionlink user manual pdf, companionlink user manual download, companionlink user manual free, companionlink user manual online.**

5 Androids database engine which, on rare occasion, would falsely identify the DJOA database as being corrupt. CompanionLink build 4052 loads DejaOffice databases with SQLite libraries that specifically prevent the bug from happening. In some versions of SugarCRM, this would prevent the events from displaying in some of the calendar views. Supports both builtin and custom Salesforce fields. Sync with Windows Live is now gold release. The new method should ensure that data integrity is preserved, in addition to improving sync performance. The corruption results from a documented bug in SQLite 3.7.0 3.7.5 Androids database engine which, on rare occasion, would falsely identify the DJOA database as being corrupt. CompanionLink build 5010 loads DejaOffice databases with SQLite libraries that specifically prevent the bug from happening. This could have caused duplicate records to appear on the initial sync. In some versions of SugarCRM, this would prevent the events from displaying in some of the calendar views. This should reduce the incidence of Invalid SQLite errors during sync. Supports both builtin and custom Salesforce fields. On the Database On the User ID tab, At this point you should review all the tabs. The Transfer But for now you should leave The settings here are critical in determining Leave the First Sync To do this Three options appear. These queries You can design one It will select It will select all TODOs This will do At that time, Abacus will run and finalize The CompanionLink for Abacus window appears. To access the companion materials that accompany your book, please select it from the list below, which is sorted by author last name. Through superior print and digital content, our authors aim to educate our readers and inspire innovation. You'll also get exclusive discounts for your favorite books!

Cookies are set by this site. To decline them or learn more, visit our Cookie page. For more information, visit the Cookie page. <http://nutronicltd.com/userfiles/case-bulldozer-manual.xml>

Lastly, some, who did not compromise but still to stay with syncing between Outlook and Google services, turned to thirdparty Outlook addins instead. With such addin tools, continuing using Google Calendar service is still possible without paying Google monthly fee. We plan to write 6 articles about 6 addins on the market. Then, you can make comparison and see which one fits you. Free or not free This is one of our main concern on choosing the alternative since Google Calendar Sync used to be free. Other concern is trying a new Outlook addin is a bit risky because we do not know if it will do the job. To me, as long as the replacement can get the job done, I do not mind to pay since I am insured by the software company on tech support when I need help. Let's check out what CompanionLink for Google can do for us. Back in the old days, it provided software of data transfer between PDA and PC. It supports a wide range of hardware and software platforms. Due to this nature, its software title is simple and straight focusing on one service at a time. Like OggSync and gSyncit, it only supports syncing with single Google account. By the way, CompanionLink for Google is a standalone software application rather than an Outlook Addin. First of all, we will perform Google OAuth routine. Typically, choosing default value is fine unless you like to sync all calendars and some of them. Click on Outlook Folders tab to assign Outlook local folder to store entries. Once finished, click on OK. Then, a popup window will ask you to proceed synchronization or not The sync session will first scan entries on both ends before synchronization process. You can also check results on both Google Calendar and Outlook. But, these features are useful. You can study user manual a bit to take advantage of it. The radial selection is single, all or default calendar. For Outlook local folder, you need to find it on another page, which is a bit less intuitive.

However, folder selection method is easier than gSyncit and OggSync. Even with this backward compatibility, I still strongly recommend you use at least Outlook 2013 or 2016. The reason is that Outlook 2010 has minor glitches and is not running as smoothly as Outlook 2013 and 2016. Yet, Outlook 2003 and 2007 had reached the end of their life cycle. Purchase with volume discount is available. A paid remote session support is available upon request. A total of 13 languages can be displayed on its official website for nonEnglish speaking visitors. Users need to get more familiar to properly configure them. When there are hundreds or even thousands of entries, it will take a lot of time. However, there will take some delay before entries created on Outlook will be synced to Google. Outlook 2003 and 2007 can only be installed with v7.0 or earlier. Outlook 2010 to 2016 can be installed with the latest v8.0. Wasting time on skimming through entries is the same as both of them. It provides useful configurable options for users. For trial version, capabilitywise, there is no limitation, but trial period lasts for 14 days. You have enough time to evaluate whether this software tool fulfills your need. Were focusing on managing—and thriving in—our new reality. Save your spot today. Apply now for our 2018 Reisman Awards. This application is available for Windows on Outlook versions 2000-2013. Customers on the EU Server can follow the steps outlined below. See this article for information on using Clio Sync with Exchange. This would create a loop of Outlook Google Clio Outlook, which could result in many, many duplicates being created. To avoid uploading personal contacts to Clio and sharing them with your coworkers, you must move them from the default contacts folder to a different folder. A good Microsoft Support article on creating and managing contact folders can be found here. Clio Sync will only sync contacts that are found in the root of the default Contacts folder.

<http://schlammatlas.de/en/node/18489>

This is true even if you change your default data file after setting up the sync Clio Sync will sync with whichever data file is currently the default. This article describes how to change the default Outlook data file. In order for calendar events to transfer properly there must be something in the Description field of the event. Further troubleshooting steps are available here. No information from

Clio will transfer to the Outlook. No records are transferred from Outlook to Clio. To disable synchronizing one type of data, uncheck the box. If no option is checked, no data will be synchronized between Outlook and Clio. The default behaviour is to have deletions propagate both ways, i.e. a record deleted in Clio will be deleted from Outlook and vice versa. If you restart your computer, your data will be synchronized upon the restart, whether you have synchronized that day already or not. Well use this information to inform the continual improvement of our selfhelp resources. Submit a request. Buy riskfree with a full moneyback guarantee! Click here to ask us anything! The Express version contains more powerful CRM features than the lower priced Standalone version. We have sites with up to 100,000 Contacts. Easily Search for any Contact based on Name, Company Name, Any Field, File As and on a custom field value like Account Number Recurring appointments, multiday events, color caregories Select contacts and past them into Excel. Make life easy by sending standard responses out to new customers. Make sure no one sees your private data. Encrypt your whole database. Easy to move or restore backup. A group distribution list is a set group of people that you email or market to regularly. Secondary Contacts are contacts that have a relationImport Contacts, Activities, and History from Act.Set individual passwords.When someone is absent you can easily drag and drop to assign the Appointment or Task to someone else. That is; you will not need to use CompanionLink any more.

<http://geemarco.com/images/c4d-manual-update.pdf>

You can always go back though. This product does not remove CompanionLink settings or modify them in any way except to turn them off. Using the Addin is optional, but it will extend the features of Outlook. For instance, in Outlook 2019, with IMAP folders, Color categories are not available. DPC will allow you to set categories for calendar events, tasks and contacts. Outlook will show the colors. Been using palm pilot and now companionlink for 30 years, Its great to be able to support a company as dedicated to its craft and people as they are. There is no other tech support that comes close. This morning I called CL support, and within 1 minute was on the phone with Renee. She immediately understood the problem, walked me through the solution stepbystep and followed up with a detailed email on the issue in case it ever happens again which I doubt it will, thanks to some software updates and settings tweaks she suggested. Immediate response, friendly and engaged service.Thats 5star. And Renee is not the only one. Every time I have called CL Support over the years every time the customer service is exactly the same. Come to think of it, the customer service from Companion Link is 6 or 7star at least, but youll just have to imagine the two extra stars on top of this review. Since then the CompanionLink team has built in pretty much all the pieces I had to have, so now I am fully transitioned to DPC. Between DejaOffice on my handhelds, CompanionLink and DejaOffice PC CRM on my PC, this feels like my dear old Palm Desktop now, with many improved features. Well Done! It syncs well to my Windows MS Outlook and to the cloud. I decided to get the Windows version. It has had several frustrating glitches, but support engineers have been extremely responsive and have been diligent in providing solutions. Judging from my experience with the excellent Android version, and because this is still a new Windows app, I am optimistic that bugs will continue to be worked out.

<http://anapanic.com/images/c4d-online-manual.pdf>

Despite any hiccups, I am happy with the app. Yes, I am rating this five stars because I am optimistic that it will turn into a really good and useful application just as the Android version has been. Best ever! Not on the fence anymore. Thats not even to mention the dynamic synch with all updates automatically populating all of my devices. Outstanding. Please keep the very useful updates coming. Android is a trademark of Google, LLC. CompanionLink Professional can be run as a Windows Service using FireDaemon Pro, which allows you to have the application start automatically at boot prior to login, start multiple instances of the application and more. This HOWTO will show you how to set it up. You can also use Fusion to manage FireDaemon and other Windows services via a web

browser. If you are using any of the other versions, substitute the information to your version. By default it is installed to C:\Program Files x86\CompanionLink\ Adjust the paths to suit your installation. Note that no parameters are required. You must run CompanionLink Professional as the user you installed it as. In the Logon Account field type your username e.g. Administrator and then enter the users password twice in the Password and Confirm fields. You can change the Process Priority to allocate more CPU time to CompanionLink Professional or specify which CPU or core CompanionLink Professional will run on in the case of multiprocessor, hyperthreaded or multicore CPUs. Uncheck Graceful Shutdown as CompanionLink Professional doesn't respond to it. Help us improve this article with your feedback. Generally, its additional files, such as preference files and application support files, But if you are trying to uninstall CompanionLink 5.3 in full and free up your disk space, Continue reading this article to learn about the proper methods for uninstalling CompanionLink 5.3.

Thus, different from the program uninstall method of using the control panel in Windows, Despite that, Select the processes associated with CompanionLink 5.3 in the list, click Quit Process icon in the left corner of the window, and click Quit in the popup dialog box if that doesn't work, then try Force Quit. Click the "X" and click Delete in the confirmation dialog. For complete removal of CompanionLink 5.3, you can manually detect and clean out all components associated with this application. You can search for the relevant names using Spotlight. To completely empty your trash can, you can right click on the Trash in the dock and choose Empty Trash, or simply choose Empty Trash under the Finder menu Notice you can not undo this act, so make sure that you haven't mistakenly deleted anything before doing this act. If you change your mind, before emptying the Trash, you can right click on the items in the Trash and choose Put Back in the list. In case you cannot empty the Trash, reboot your Mac. If so, just run such an app and follow the prompts to uninstall properly. After that, search for related files to make sure if the app and its additional files are fully deleted from your Mac. But it still may seem a little tedious and timeconsuming for those OS X beginners to manually remove CompanionLink 5.3 and totally clean out all its remnants. Why not try an easier and faster way to thoroughly remove it Here MacRemover is recommended for you to accomplish CompanionLink 5.3 uninstall within three simple steps. MacRemover is a lite but powerful uninstaller utility that helps you thoroughly remove unwanted, corrupted or incompatible apps from your Mac. Now let's see how it works to complete CompanionLink 5.3 removal task. With its unique Smart Analytic System, MacRemover is capable of quickly locating every associated components of CompanionLink 5.3 and safely deleting them within a few clicks. Thoroughly uninstalling CompanionLink 5.

3 from your mac with MacRemover becomes incredibly straightforward and speedy, right. You don't need to check the Library or manually remove its additional files. Actually, all you need to do is a selectanddelete move. As MacRemover comes in handy to all those who want to get rid of any unwanted programs without any hassle, you're welcome to download it and enjoy the excellent user experience right now! Every time I have to manually clean out the cache files or folders I wonder if there is any handy uninstaller to save my time and energy. So here it is! I accidentally browsed on this website and surprisingly found the tool you recommended really works for me. Now with MacRemover I don't need to worry about any possible removal issues. It always performs smoothly and works effectively to remove any unwanted apps from my Mac. That's exactly what I need. Thank you for your brilliant product! It helps me get rid of Dropbox as well as its plugins within only a few clicks. So easy to use. If anyone wanna sweep out Dropbox, I strongly recommend you MacRemover! Oops, it almost drives me crazy. I just try MacRemover, then problem solved. Trust me, bro, MacRemover can handle almost every popular program uninstall and you will enjoy the convenience and effectiveness of this tool. Thanks for your detailed tutorials and especially for this professional uninstall tool. You did a great job in building this website, providing specific removal guides for Mac users. I do what you suggest to remove Photoshop CS6 and it did help me out.

Excellent work, you guys! To calculate the overall star rating and percentage breakdown by star, we don't use a simple average. Instead, our system considers things like how recent a review is and if the reviewer bought the item on Amazon. It also analyzes reviews to verify trustworthiness. See All Buying Options Add to Wish List Disabling it will result in some disabled or missing features. You can still see all customer reviews for the product.

VERY easy to set up it tells you your ip address and network name to put into your device.I called amazon and they didnt know how to register it.Reviewed in the United States on December 29, 2017 I purchased this thinking it was the latest version 5. I later found out from the product web site that version 8 is the latest.Please try again later. P. gordon 5.0 out of 5 stars VERY easy to set up it tells you your ip address and network name to put into your device.I called amazon and they didnt know how to register it.Please try again later. Please try again later. Trust N. Me 3.0 out of 5 stars I later found out from the product web site that version 8 is the latest.Please try again later. Please try again later. dz 5.0 out of 5 stars This software takes the guess work out of syncing your calendars.Please try again later. Please try again later. Amazon Customer 4.0 out of 5 stars Please try again later. Please try again later. Book Glutton 1.0 out of 5 stars When it doesnt, WATCH OUT I have been using this since June 2012 for my Kindle HD and a couple of Windows 8.1 phones that Ive had. I needed something to sync my Contacts and Calendar to both. I tried Microsoft and gave up on them. Its a shame they cant sync their own softwares data. Anyway, The first problem I had was with DUPLICATES and TRIPLICATES. It was a mess! They opened a support ticket for me. I have wiped DejaCloud several times, recreating it, as well as wiped the data on my devices, with no success. I am currently dealing with another problem. It is truncating FIRST NAMES that have more than one name, like Mary Elizabeth, Ann Marie, Terri Ann, John Paul, Billy Jo, Pastor Bob, Cheap Frank, etc. I enter data this way because this is how they are called. I can begin with a new Outlook file from a good backup, sync oneway Outlook to DejaCloud, wiping it first; then uninstall and reinstall DejaOffice on my phone, choosing to read oneway from DejaCloud and the data appears exactly as it should.

If then I change the settings for both CompanionLink on my PC and DejaOffice on my phone to sync push both ways and automatically, and do something like add two new contacts to my phone and one appointment, I run into trouble. If the changes dont appear right away in Outlook, then I initiate the sync manually from CompanionLink. This is a new problem. It has worked with my Outlook data for the past three years. It worked for 12 years using Nokias PC Suite and then their Nokia Suite on my Nokia phones. They say they cannot recreate or duplicate the problem. Isnt that unbelievable. Im just a user. I supply them with Outlook data. Once their software processes it, I actually loose some of it. Their software is ripping it away. I have literally spent days upon days restoring my data and trying to find workarounds. I have over 1,200 contacts and thousands of calendar entries; but I always had these numbers. Its a big job! Things always worked. I also expect them to work if I am paying for the software. Like I said, the software is great WHEN IT WORKS. When it doesnt, WATCH OUT. It wasnt a simply a guess. You cant always blame bad behaving software on your users, especially when you're dealing with stuff like an Outlook database. So, I signed up for a trial period with AkruSync. Their website seemed to promise a lot. However, I did not like the setup process a bit crude! or how it worked with IP addresses 192.168.x.x assigned by the router and its User Interface, but eventually got used to it and bought it. I have not had a problem syncing contacts, calendar, etc.And that's the same data that worked with the old Nokia PC Suite when I was using it. It is worth looking into. Its virtually trouble free, except when the IP Address changes rarely with Netgear. When their business collapses, maybe theyll get the message!Please try again later. Please try again later. Carol Anne Ogdin 3.

0 out of 5 stars Dont buy this product for stability or reliability, youll be sorely disappointed. If you love tinkering with your computer and your Androidinstead of making appointments that you can get

to ontime, this is the product for you. If you run a business, dont rely on it. I guarantee youll be disappointed. No significant improvements in Version upgrades. This is software development at its worst, and customer service is unbelievably worse than that. If youve got it, it can be made to work after a LOT of twiddling and tweaking, and theres absolute NO REASON to upgrade unless you change your cellphone. Im STILL July, 2018 looking for a reputable company that I can buy a more reliable product from. To their credit, it generally works after several attempts. To their discredit, theyre a typical small software vendor with few really experienced professionals, in my opinion. Their staff are not particularly friendly, and they simple wont accept anybodys input on what needs to be fixed. I started my career with the venerable RCA 301 computer, introduced in 1960. Assuming that Im just an ignorant teenager playing with their product is no way to treat a paying customer. Im using their longinthetooth version 3018, which hasnt apparently updated for a long time. Please try again later. Please try again later. Baltimore guy 1.0 out of 5 stars The software is not ready for use as it creates multiple entries of a single appointment. The multiple entries are difficult to remove and must be done one at a time on one of your two calendars. After cleaning up the calendar in Google, then delete your Outlook calendar. Then, use CompanionLink to sync one way from your Google calendar to a newly created Outlook calendar. I have spent hours doing this, only to have more duplicates created by CompanionLink following an update in software to their latest released version. If I had known that their update would create multiple entries, I would not have updated the software.

This software is BAD and will create hours upon hours upon hours of work for you. AVOID. CompanionLinks support personnel are pleasant and professional, but they do not have any answers to avoid the creation of multiple entries. They blame Google for changing its software. Please try again later. Please try again later. TechWrite 5.0 out of 5 stars At the outset, their system was kludgy, sync failures and changes in procedure were frequent, but Companion Link Tech Support always answered my calls promptly and got me going immediately. Nowadays, their technology has improved immensely and things are very different. CompanionLink is now consistent, reliable and simple to use. I recently purchased another CLO account for my wifes iPhone. I use a Galaxy S4 Android, am not an iPhone user myself, and didnt have a clue about setting it up. As usual, CompanionLinks support team answered my call promptly and walked me through the setup. The iPhone syncs only through a wireless network, which is slightly slower than the direct USB sync I use with the Galaxy, where wireless sync is optional. But syncing either way is very quick, and with the iPhone you can sync without a cable wherever you have a wireless LAN. Can you imagine having to catch a business flight and being unable to sync your phone. IMHO, Tech Support is everything. I recently abandoned DropBox after 10 years with a professional account when I attempted to sync a new PC, lost all my work files, and discovered that DropBox had eliminated their phone support. They finally responded to my service ticket after 4 days. Id have been looking for a new job by then if I hadnt duplicated my hard drive the day before. You wont have this problem with CompanionLink! Please try again later. Please try again later. T. Plaski 1.0 out of 5 stars I have all the most recent apps and builds downloaded. It still does not work most of the time.

A tech agent helped me get the sync to work on my new phone but only after trying several times. The sad thing is that I know from experience that I will have the same frustrations every time I try to sync from my PC Outlook to my phone. I do not advise purchasing this app. I have not found anything else either. Guess I will have to get with the times and use gmail for calendar and contacts. not my favorite choice either. Please try again later. Please try again later. Amazon Customer 1.0 out of 5 stars If it worked it would allowed me to sync calendars between my Google calendar on Samsung Android and MS Outlook for Mac a key functionality missing from the marketplace for quite some time. However this product clearly has not been thoroughly tested and at this point Im giving up and asking for my money back. Ive worked with their tech support over the last few months on a half dozen major issues since I first installed, spent many hours capturing and

sending logs, describing the various problems, downloading yet another beta version to try out, discovering yet another set of problems with that one etc. etc. Clearly they do not have a handle on their development process. As an IT guy for 30 years I can recognize a development shop in shambles and this is one. They probably dont have enough money to pay for adequate testing. So I would definitely stay away from this high maintenance product.Please try again later. Please try again later.

<http://eco-region31.ru/bosch-tka8sl1-manual>